

SEGEZHA SAPPHIRE
**ON THE MOVE.
IN ITS
PROPER
PLACE**



**FRAGILE
CAUTION**



About the Product

Segezha Sapphire is a plywood made of high-strength top-quality birch veneer with a distinctive configuration that provides increased strength and is equipped with a special multi-layer embossed coating with high wear, slip, and water resistance.



Application

Segezha Sapphire

Segezha Sapphire plywood is a floor-covering base layer designed to bear heavy physical loads such as flooring for heavy road, railroad and maritime transport, warehouses and industrial buildings, areas with high pedestrian traffic, unloading platforms, piers, decks, etc.



Railroad transport



Road freight



Maritime transport



Industrial flooring



Pedestrian areas



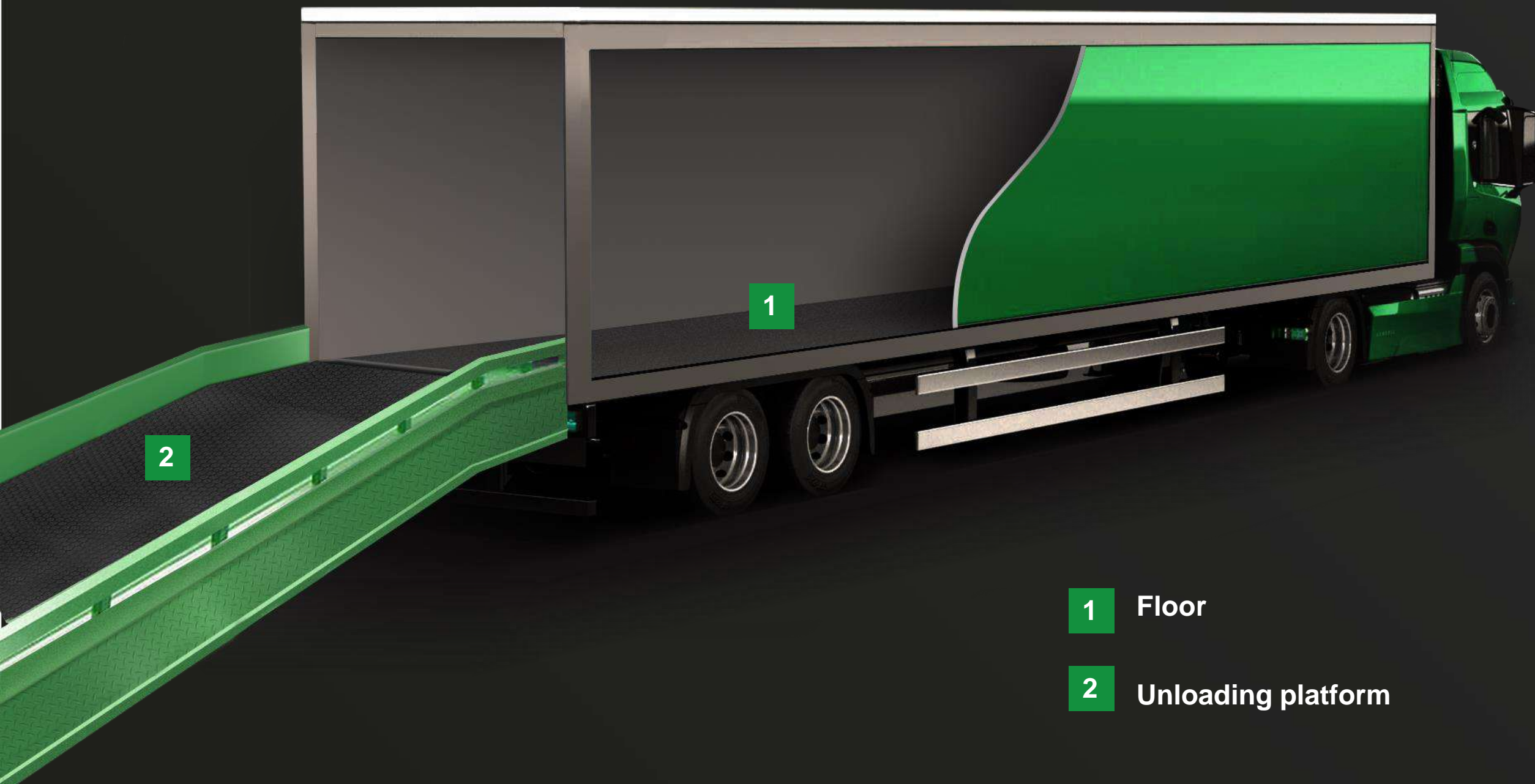
Use in the transportation sector

Due to enhanced slip resistance and strength characteristics, **Segezha Sapphire** is the ideal flooring solution for heavy commercial vehicles and unloading areas.

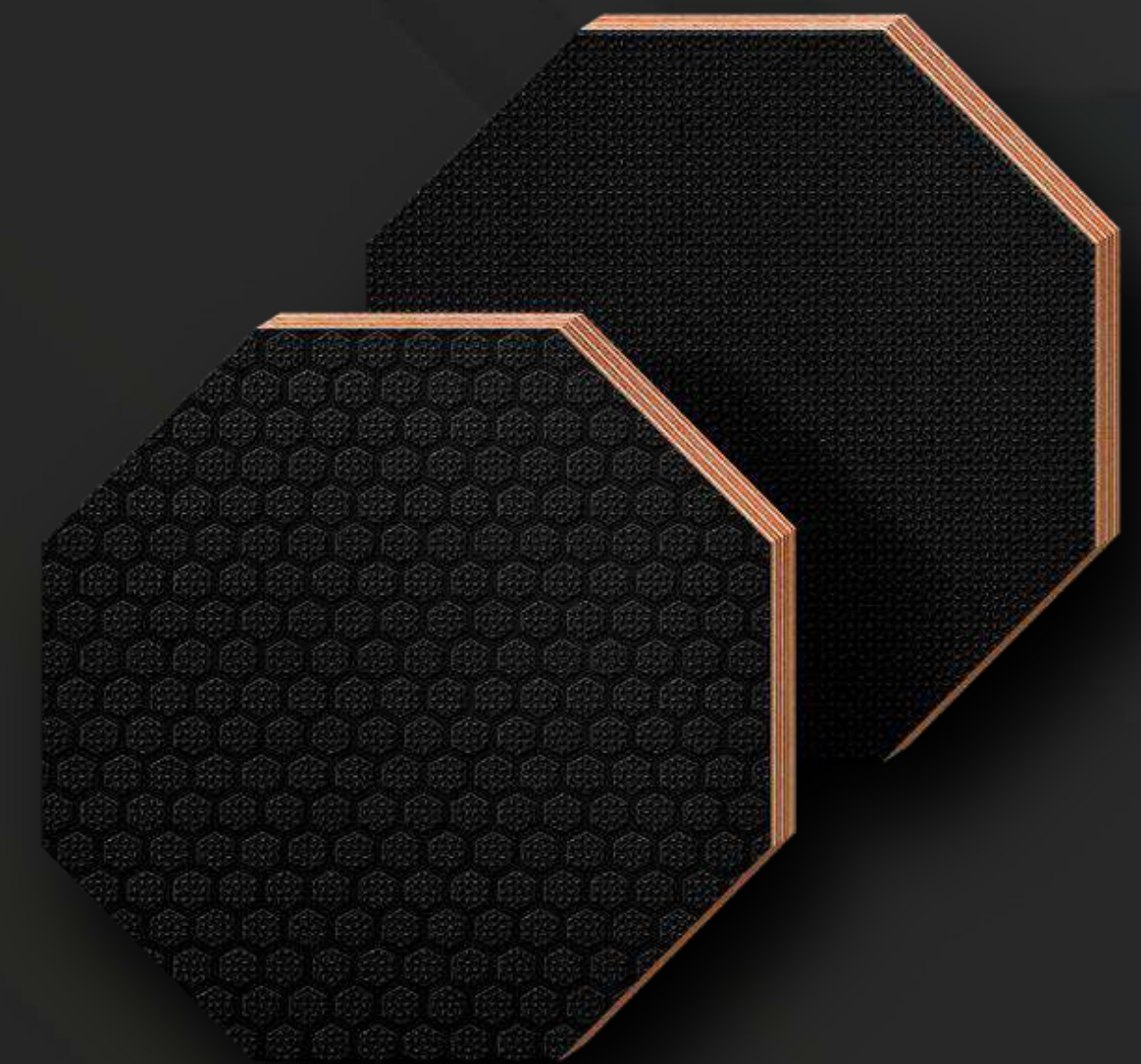
Segezha Sapphire

Segezha Sapphire
WIRE/HEXA

Anti-slip coating

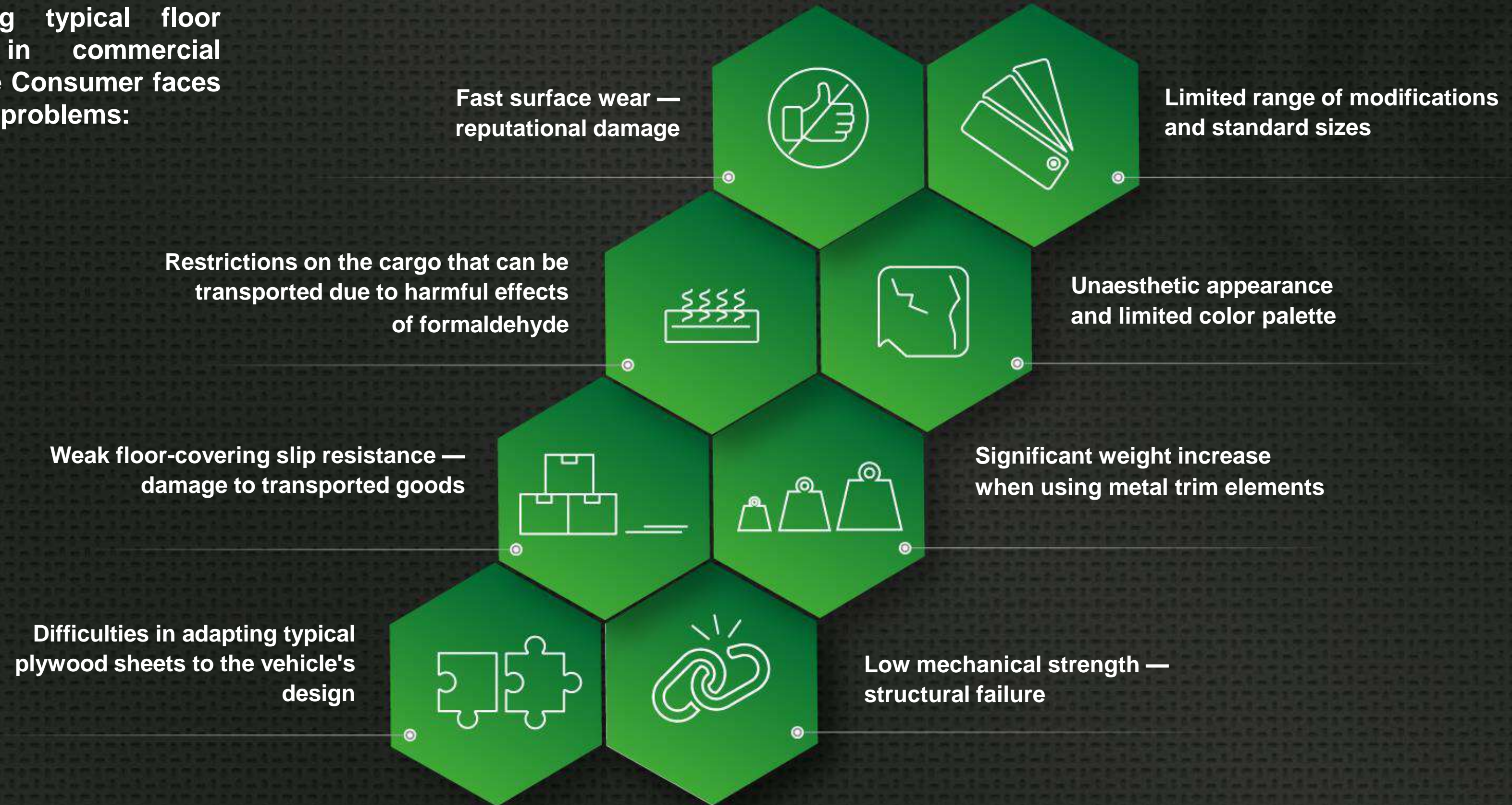


- 1 Floor
- 2 Unloading platform



Customer problems

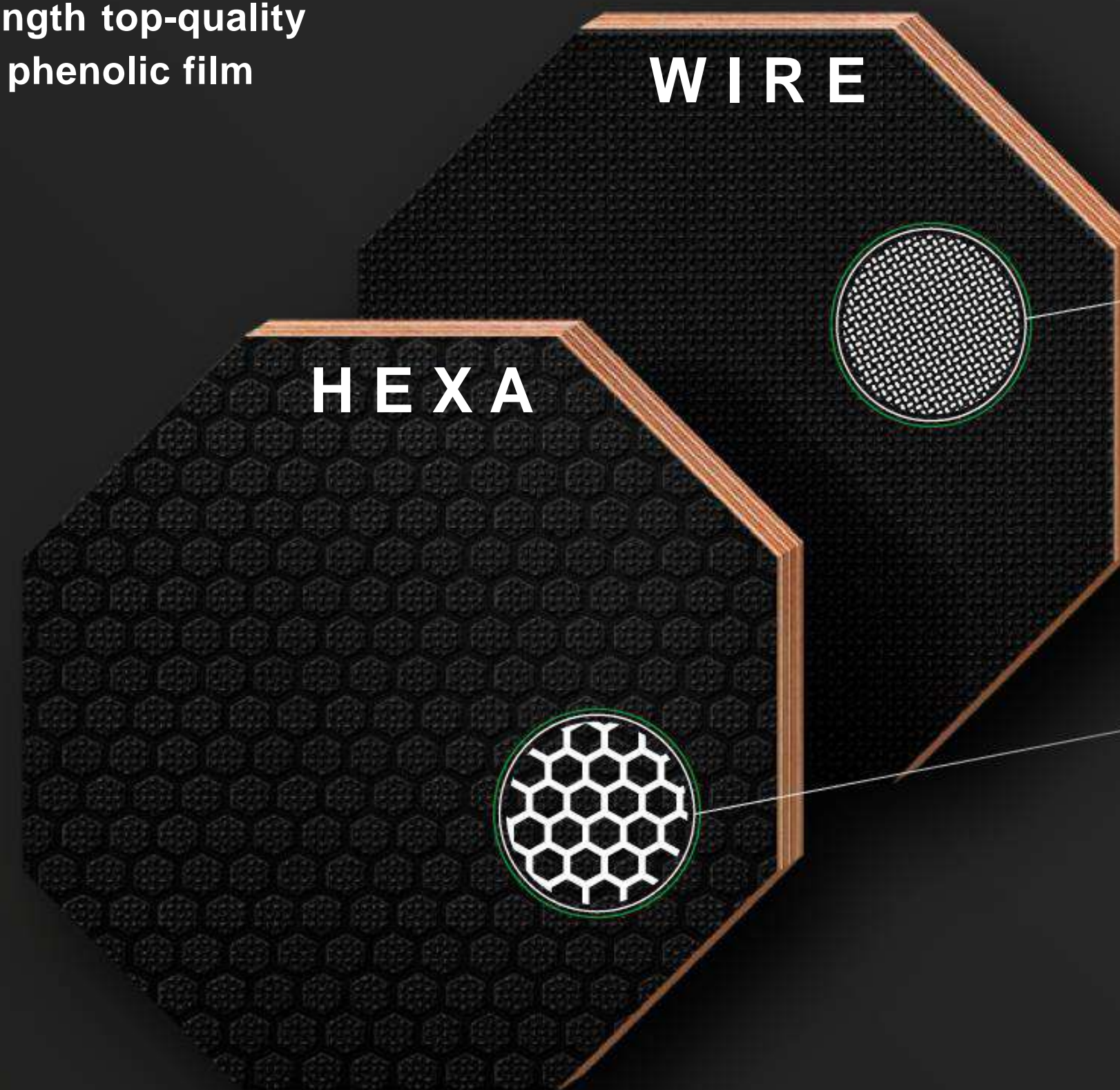
When using typical floor coverings in commercial vehicles, the Consumer faces a number of problems:



Surface type

Segezha Sapphire

Plywood made of high-strength top-quality birch veneer, coated with a phenolic film with an embossed coating.



WIRE / mesh

Texture
mesh/smooth
Color black/brown
Density, g/m²
325/120, 325/240

HEXA / hex a

Texture
hexa/smooth
Color
black/brown
Density, g/m²
325/120, 325/240



Characteristics

Segezha Sapphire

Sheet size, ft — mm	4x8x4 5x10 4x10 5x8	1220x2440x1220 1250x2500x1250 1500x3000, 1525x3050 1220/1250x3000/3050 1500/1525x2400/2440/2500
Sheet thickness, mm	6–40	
Surface type	Hexa / smooth, mesh / smooth	
Coating type	Phenolic	
Surface color	Black / Brown	
Wear resistance, Taber test, rotations	> 3000	
Resistance to wheel load, Rolling test (at 100 kg), cycles	≥ 9000	
Coating density, g/m ²	≥ 325	
Water absorption, %	19	
Glue category	WBP	
Formaldehyde emission class	E1	
Plywood moisture content, %	≤ 10	
Plywood density, kg/m ³	650–730	



Key advantages

Segezha Sapphire



High-quality birch veneer



Reinforced veneer configuration



Reduced water absorption



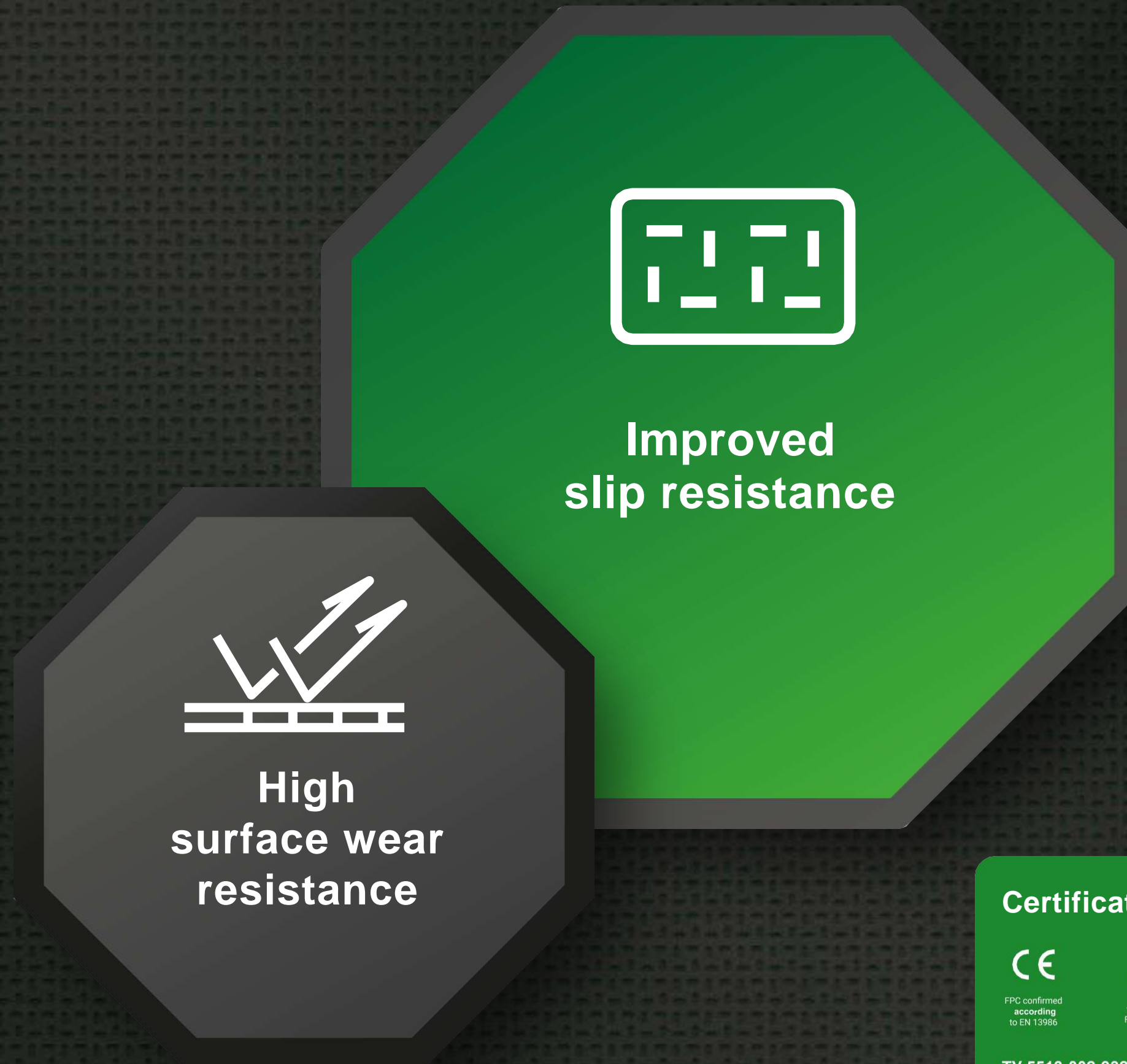
High alkali resistance



Excellent aesthetic qualities



Low formaldehyde emission



Certificates and TS:

CE FSC PG CARB

FPC confirmed according to EN 13986 www.fsc.org FSC-C084688

TY 5513-002-93222532-2016
ISO 14001:2015 ISO 9001:2015 OHSAS 18001:2007



Customer benefit

Segezha Sapphire



Minimization of quality complaints and claims during the warranty period



Reduced fuel costs for the operating organization



Plywood components provide the final product with a high-quality level. No reputational damage



Large vehicle carrying capacity



Alternative, aesthetic color scheme



Minimization of the risk of damage to cargo during transportation



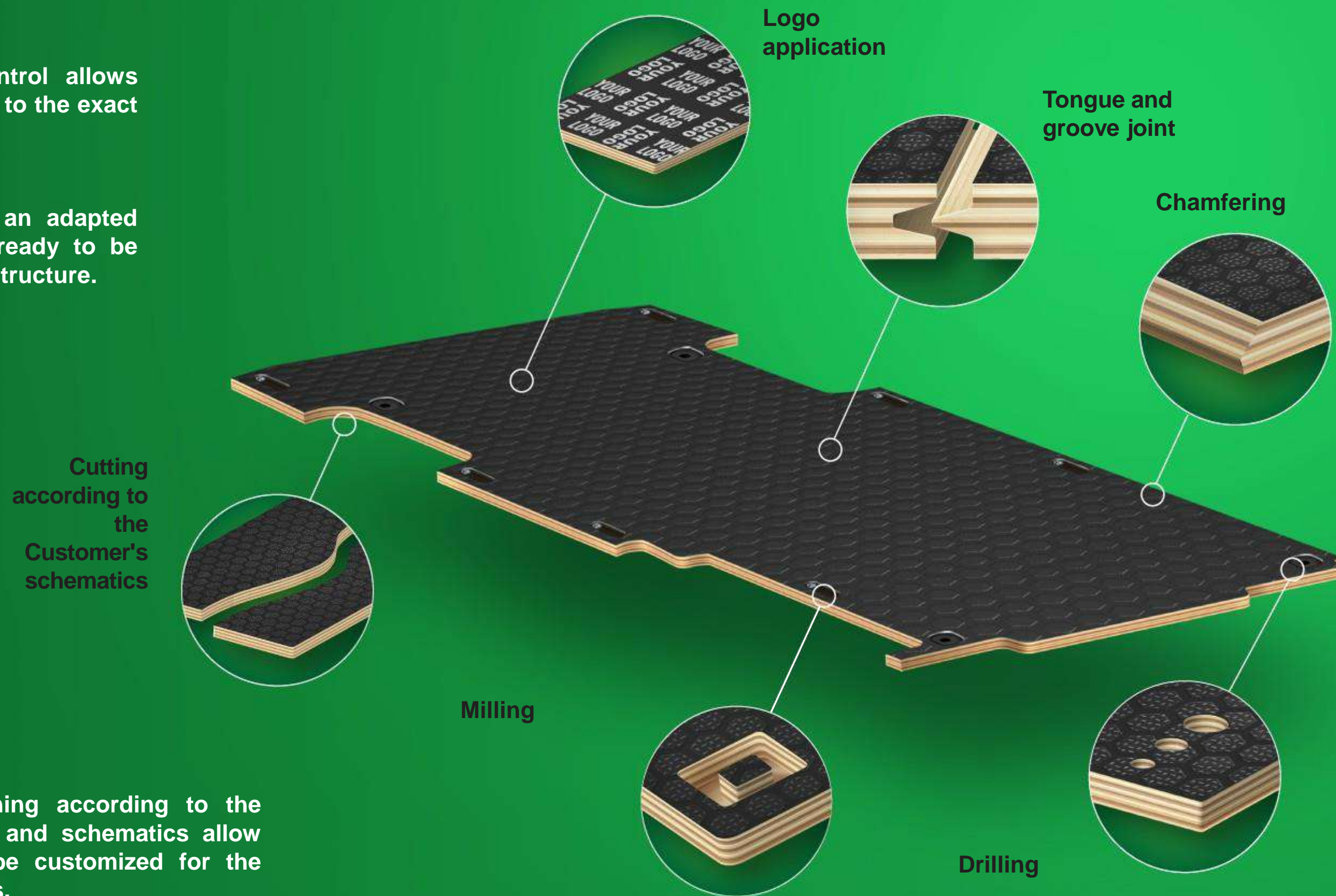
A more environmentally friendly solution as added value to the final product



Customer service

Segezha Sapphire

- Computer numerical control allows plywood sheets to be cut to the exact parameters specified.
- The Customer receives an adapted set of plywood sheets ready to be assembled into a single structure.



Cutting and CNC machining according to the Customer's specifications and schematics allow the finished product to be customized for the Customer's unique projects.



Contacts

Moscow Office
10 Presnenskaya Naberezhnaya (block C),
Moscow, Russia, 123112

 +7 (499) 962 82 00

 infoply@segezha-group.com

segezha-group.com

